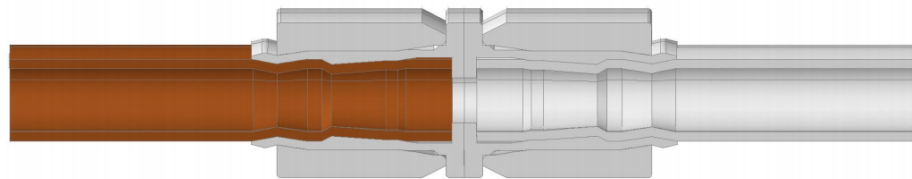


# Introduction of Complex Ring Connector

The complex ring consists of two single joints and one connecting sleeve.

The complex ring compresses the tubes radially and evenly to deform the joined tubes so that they form a metal-to-metal sealing surface tightly with the connecting sleeve. In addition, the quick-closing sealing liquid added before the crimping is quickly solidified after being pressed into the position, and all axial leakage passages are more completely sealed.



★  $P_N=50\text{bar}(75\text{bar})$ ;

**Maximum working pressure  $P_N = 50\text{bar}$  (or  $75\text{bar}$ );**

★  $P_P=4P_N\geq 200\text{bar}$

**Maximum burst pressure  $P_P=4P_N\geq 200\text{bar}$**

★  $-50^\circ\text{C} \sim +150^\circ\text{C}$  (  $220^\circ\text{C}$  ) ;

**Operating temperature range  $-50^\circ\text{C} \sim +150^\circ\text{C}$  (or  $220^\circ\text{C}$ )**

The complex ring can be connected with metal round pipes of various materials; it has the same life as the connected piping system.

## **Application of the complex ring:**

It is applied to Variable frequency VRF air conditioning installation, stainless steel water pipe installation, solar hot water and solar collector system installation, refrigerator/freezer production line and after-sales maintenance, seafood machine/pool machine production line and system installation; automobile air conditioner, high-speed train air conditioner;

## **Advantage:**

Efficient, reduce the leak rate, avoid electrochemical corrosion, simplify the operation; no impurities / dirt, no carbides when using , environmentally; no high temperature ,no flame, no fire safety hazards, simple construction procedures, no need to get the dangerous goods transport certificate; There is no need to wait , it can operates at any time during the maintenance of commercial display cabinets.